

Ms
N150
T
1881

ILLUSTRATIONS
OF THE
TEXTILE MANUFACTURES
OF INDIA.

B.

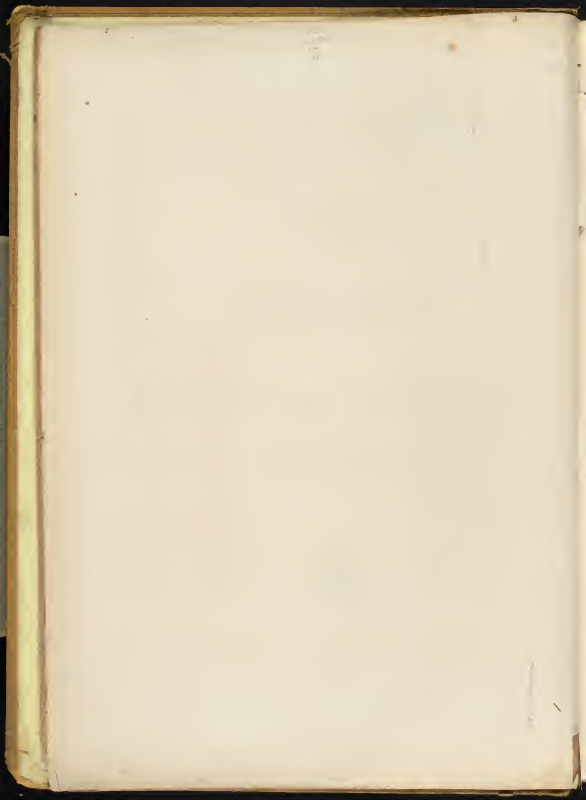


SCIENCE AND ART DEPARTMENT
OF THE COMMITTEE OF COUNCIL ON EDUCATION,
SOUTH KENSINGTON MUSEUM.

ILLUSTRATIONS
OF
THE TEXTILE MANUFACTURES
OF INDIA.



LONDON: 1881.





TURBANS.

2. PRINCIPAL END OF PIECE.
 Length, 2 Yds. 32 Ins.; Width, 15 Ins.; Weight, 14 oz. 3 dr.

BENARES.

3. PRINCIPAL END OF PIECE. - - - 3a. OPPOSITE END OF PIECE.
 Length, 13 Yds. 30 Ins.; Width, 13 Ins.; Weight, 8 oz. 13 dr.

HYDERABAD, SIND.

4. PRINCIPAL END OF PIECE.
 Length, 2 Yds. 28½ Ins.; Width, 15 Ins.; Weight, 13 oz. 13 dr.

BENARES.





TURBANS.

PRINCIPAL END OF PIECE.

| | | |
|---------|--------|----------------|
| Length, | | 1 Yd. 13½ Ins. |
| Width, | | 1 Yd. 12 Ins. |
| Weight, | | 2 oz. 5 dr. |

BHURTPORE.

NO. 5, SECOND SERIES.

PRINCIPAL END OF PIECE.

| | | |
|---------|--------|----------------|
| Length, | | 1 Yd. 24½ Ins. |
| Width, | | 1 Yd. 22 Ins. |
| Weight, | | 9 oz. 2 dr. |
| Price, | | £3 10s. |

BENARES.

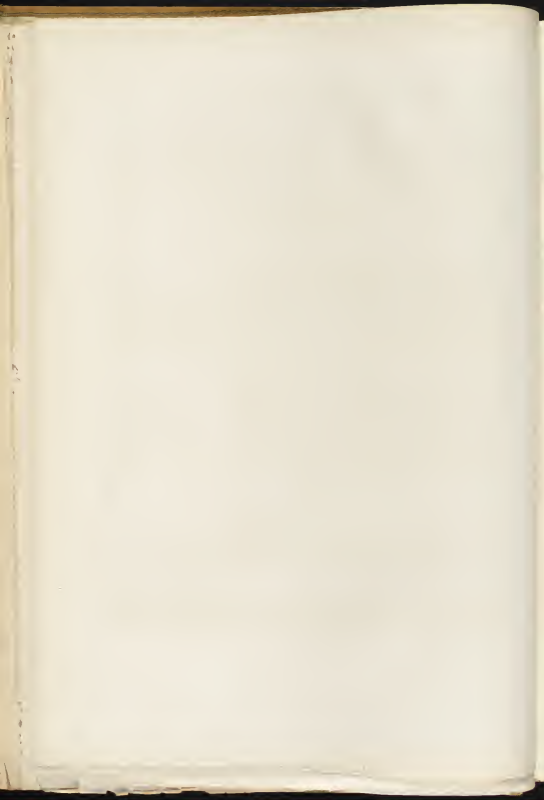
NO. 6, SECOND SERIES.





TURBANS.

7. PRINCIPAL END OF PIECE. - 7A. OPPOSITE END OF PIECE, FROM CHANDARI.
Length, 29 Yds 10 Ins.; Width, 111 Ins.; Weight, 7 oz. 14 dr. Price, \$21 15. 2d.
8. PRINCIPAL END OF PIECE. - 8A. OPPOSITE END OF PIECE, FROM CHANDARI.
Length, 29 Yds 22 Ins.; Width, 113 Ins.; Weight, 8 oz. Price, \$21 15. 2d.
9. PRINCIPAL END OF PIECE. - 9A. OPPOSITE END OF PIECE, FROM CHANDARI.
Length, 30 Yds 31 Ins.; Width, 10 Ins.; Weight, 7 oz. 1 dr. Price, \$21 35. 0d.
10. PRINCIPAL END OF PIECE. - 10A. OPPOSITE END OF PIECE, FROM CHANDARI.
Length, 28 Yds 12 Ins.; Width, 81 Ins.; Weight, 5 oz. 8 dr. Price, \$21 35. 0d.
11. PRINCIPAL END OF PIECE. - 11A. OPPOSITE END OF PIECE, FROM CHANDARI.
Length, 30 Yds 22 Ins.; Width, 102 Ins.; Weight, 7 oz. Price, \$21 35. 0d.
12. PRINCIPAL END OF PIECE. - 12A. OPPOSITE END OF PIECE, FROM CHANDARI.
Length, 23 Yds 54 Ins.; Width, 125 Ins.; Weight, 12 oz. 3 dr. Price, \$21 105. 6d.
13. PRINCIPAL END OF PIECE. - 13A. OPPOSITE END OF PIECE, FROM OMRAIR, CENTRAL INDIA.
Length, 6 Yds 102 Ins.; Width, 121 Ins.; Weight, 2 oz. 11 dr. Price, 195. 3d.
14. PRINCIPAL END OF PIECE. - 14A. OPPOSITE END OF PIECE, FROM CHANDARI.
Length, 29 Yds 30 1/2 Ins.; Width, 12 Ins.; Weight, 8 oz. 4 dr. Price, \$21 15. 5d.





TURBANS.

15. PRINCIPAL END OF PIECE. - 15a. OPPOSITE END OF PIECE. FROM CHUNDEREE.
Length, 28 Yds. 133 Ins.; Width, 3 Ins.; Weight, 4 oz. 2 dr. Price, 15s.
16. PRINCIPAL END OF PIECE. - 16a. OPPOSITE END OF PIECE. FROM HYDERABAD, DECCAN.
Length, 23 Yds. 311 Ins.; Width, 113 Ins.; Weight, 6 oz. 23 dr. Price, 16s.
17. PRINCIPAL END OF PIECE. - 17a. OPPOSITE END OF PIECE. FROM CHUNDEREE.
Length, 39 Yds. 10 Ins.; Width, 131 Ins.; Weight, 9 oz. 9 dr. Price, 21 9s. 8d.
18. PRINCIPAL END OF PIECE. - 18a. OPPOSITE END OF PIECE. FROM DELHI.
Length, 23 Yds. 311 Ins.; Width, 113 Ins.; Weight, 5 oz. 4 dr. Price, 18s. 6d.
19. PRINCIPAL END OF PIECE. - 19a. OPPOSITE END OF PIECE. FROM NANDAIR, HYDERABAD.
Length, 27 Yds. 20 Ins.; Width, 151 Ins.; Weight, 12 oz. 24 dr. Price, 26 2s.
20. PRINCIPAL END OF PIECE. - 20a. OPPOSITE END OF PIECE. FROM CHUNDEREE.
Length, 23 Yds. 211 Ins.; Width, 81 Ins.; Weight, 4 oz. 11 dr. Price, 15s.
21. PRINCIPAL END OF PIECE. - 21a. OPPOSITE END OF PIECE. FROM BHURTPORE.
Length, 22 Yds. 281 Ins.; Width, 111 Ins.; Weight, 13 oz. 4 dr.
22. PRINCIPAL END OF PIECE. - 22a. OPPOSITE END OF PIECE. FROM DELHI.
Length, 17 Yds. 72 Ins.; Width, 8 Ins.; Weight, 2 oz. 14 dr. Price, 12s.
23. PRINCIPAL END OF PIECE. - 23a. OPPOSITE END OF PIECE. FROM NANDAIR, HYDERABAD.
Length, 23 Yds. 131 Ins.; Width, 10 Ins.; Weight, 3 oz. 13 dr. Price, 21 10s.





TURBANS.

- | | | | |
|-----------------------------|----------------|----------------------|-----------------------------|
| 24. PRINCIPAL END OF PIECE | - | - | 24A. OPPOSITE END OF PIECE. |
| Length, 16 Yds 35 Ins. | Width, 8 Ins. | Weight, 2 oz. 13 dr. | |
| 25. PRINCIPAL END OF PIECE. | - | - | 25A. OPPOSITE END OF PIECE. |
| Length, 13 Yds 32 Ins. | Width, 9 Ins. | Weight, 3 oz. 7 dr. | |
| 26. PRINCIPAL END OF PIECE. | - | - | 26A. OPPOSITE END OF PIECE. |
| Length, 16 Yds 21 Ins. | Width, 8½ Ins. | Weight, 2 oz. 11 dr. | |

JEYPORE.

- | | | | |
|-----------------------------|----------------|----------------------|-----------------------------|
| 27. PRINCIPAL END OF PIECE. | - | - | 27A. OPPOSITE END OF PIECE. |
| Length, 17 Yds 1 In. | Width, 9½ Ins. | Weight, 3 oz. 13 dr. | |

DELHI.





TURBANS.

28. PRINCIPAL END OF PIECE. - - - 28a. OPPOSITE END OF PIECE.
 Length, 17 Yds. 30 Ins.; Width, 7½ Ins.; Weight, 2 oz. 11 dr.

29 TO 36. PATTERNS OF CENTRES OF TURBAN PIECES WITH ENDS, SIMILAR TO NOS. 28 & 36.

36. PRINCIPAL END OF PIECE. - - - 36a. OPPOSITE END OF PIECE.
 Length, 14 Yds. 30 Ins.; Width, 7½ Ins.; Weight, 2 oz. 5 dr.

JEYPORE.





TURBANS.

PRINCIPAL END OF PIECE.

| | |
|------------------|-----------------|
| Length, | 14 Yds. 25½ In. |
| Width, | 7½ In. |
| Weight, | 3 oz. 2 dr. |

JEYPORE.

NO 40, SECOND SERIES.

PRINCIPAL END OF PIECE.

| | |
|-----------------|--------------------|
| Length, | 3 Yds. 10½ In. |
| Width, | 3 Yds. 21½ In. |
| Weight, | 1 lb. 11 oz. 6 dr. |
| Price, | £6 10s. |

COIMBATORE.

NO 41, SECOND SERIES.





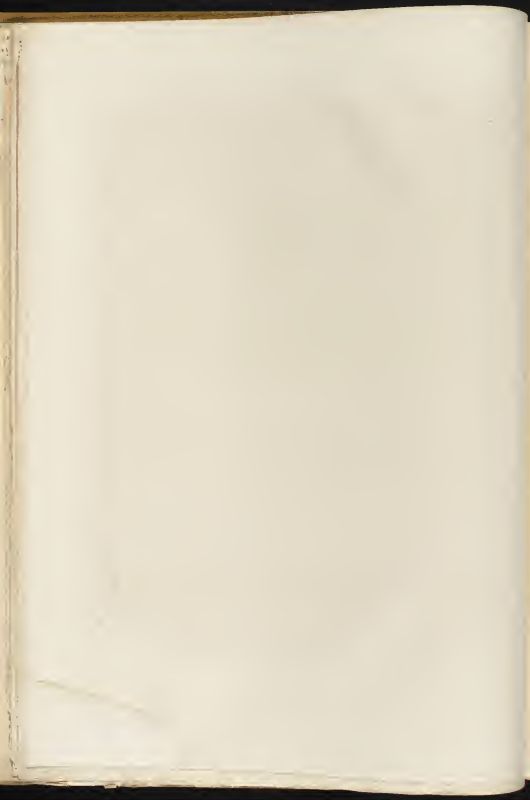
48.

LOOM EMBROIDERED TURBAN-PIECE.

HYDERABAD - DECCAN

Length, 2 Yds. 26 Ins.; Width, 2 Yds. 22 Ins.; Weight, 1 lb.

NO 48, SECOND SERIES





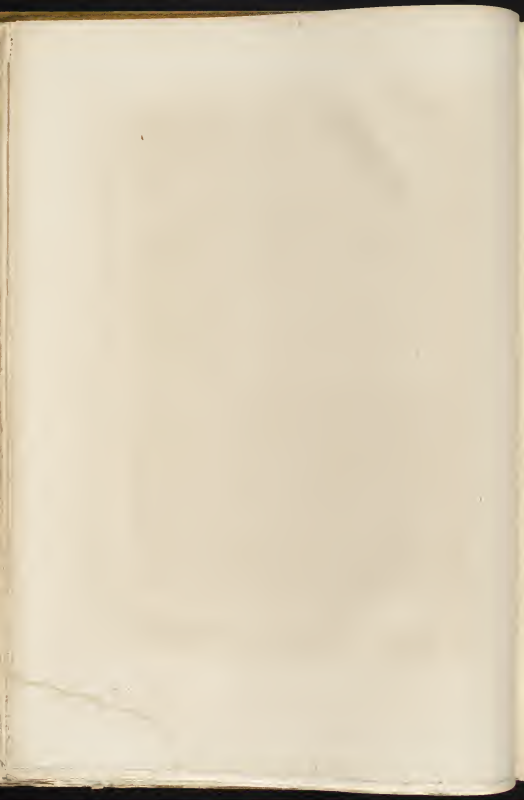
TURBAN.

PRINCIPAL END OF PIECE.

Length, 3 Yds 22 Ins.; Width, 26½ Ins.; Weight, 7 oz. 5 dr.

BURANPOOR, DECCAN.

NO. 52, SECOND SERIES





TURBANS.

PRINCIPAL END OF PIECE.
 Length, 2 Yds. 20½ Ins.
 Width, 13 Ins.
 Weight, 4 oz. 5 dr.

BOORHANPORE.

NO. 56, SECOND SERIES

NO. 57. PRINCIPAL END OF PIECE.
 NO. 57A. OPPOSITE END OF PIECE.
 Length, 24 Yds. 18 Ins.
 Width, 9½ Ins.
 Weight, 10 oz. 3 dr.
 Price, £24

RQHTUCK, PUNJAB.

NO. 57, SECOND SERIES

PRINCIPAL END OF PIECE.
 Length, 2 Yds. 21 Ins.
 Width, 13 Ins.
 Weight, 4 oz. 7 dr.

BOORHANPORE.

NO. 58, SECOND SERIES





TURBAN.

PRINCIPAL END OF PIECE.

Length, 40 Yds. 25 Ins.; Width, 19½ Ins.; Weight, 3 lb. 5 oz. 1 dr. Price, £3s.

NOWANUGGUR, KATTYWAR.

NO. 59, SECOND SERIES





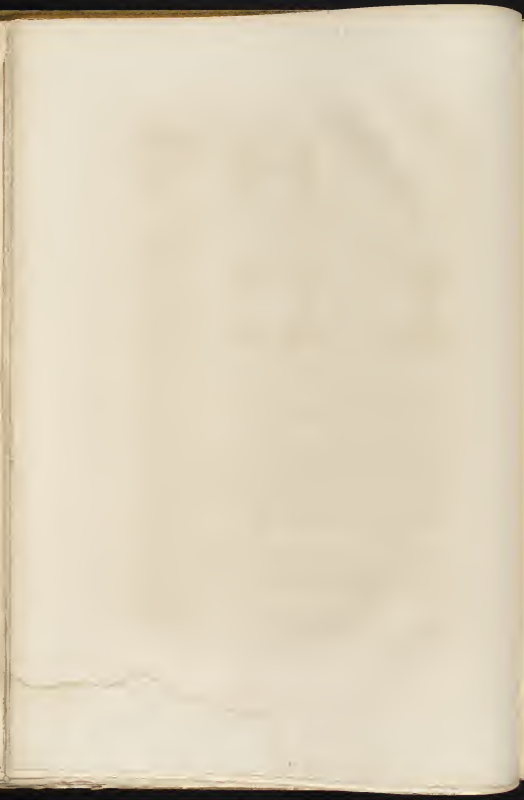
TURBAN.

PRINCIPAL END OF PIECE.

Length, 1 Yd. 2 1/2 Ins.; Width, 1 Yd. 20 Ins.; Weight, 14 oz. 7 dr. Price, £10.

MORVEE, KATTYWAR.

NO. 60, BROAD STREET.





TURBAN.

PRINCIPAL END OF PIECE.

Length, 1 Yd. 19 Ins.; Width, 1 Yd. 25 Ins.; Weight, 12 oz. 13 gr.

AHMEDABAD.

NO 61, SECOND SERIES.





62.



63.



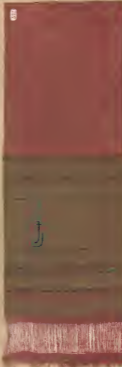
64.



62.



63.



64.

TURBANS.

No. 62, PRINCIPAL END OF PIECE.
 No. 62A, OPPOSITE END OF PIECE.
 Length, 31 Yds 11 Ins.
 Width, 18½ Ins.
 Weight, 1 lb. 2 oz. 15 gr.
 Price, £1.

AHMEDABAD.
 NO. 62, SECOND SERIES.

No. 63, PRINCIPAL END OF PIECE.
 No. 63A, OPPOSITE END OF PIECE.
 Length, 25 Yds. 4 Ins.
 Width, 16 Ins.
 Weight, 11 oz.
 Price, £1.

AHMEDABAD, BOMBAY.
 NO. 63, SECOND SERIES.

No. 64, PRINCIPAL END OF PIECE.
 No. 64A, OPPOSITE END OF PIECE.
 Length, 54 Yds. 3½ Ins.
 Width, 20 Ins.
 Weight, 5 lb. 3 oz.
 Price, £4 16s.

AHMEDNUGGUR.
 NO. 64, SECOND SERIES.





MAN'S GARMENT.

Length, 3 Yds 8 $\frac{1}{2}$ Ins., Width, 30 Ins., Weight, 7 oz. 1 lb.

RAJAHAMUNDRY.

NO 65, SECOND SERIES.

' 8321'





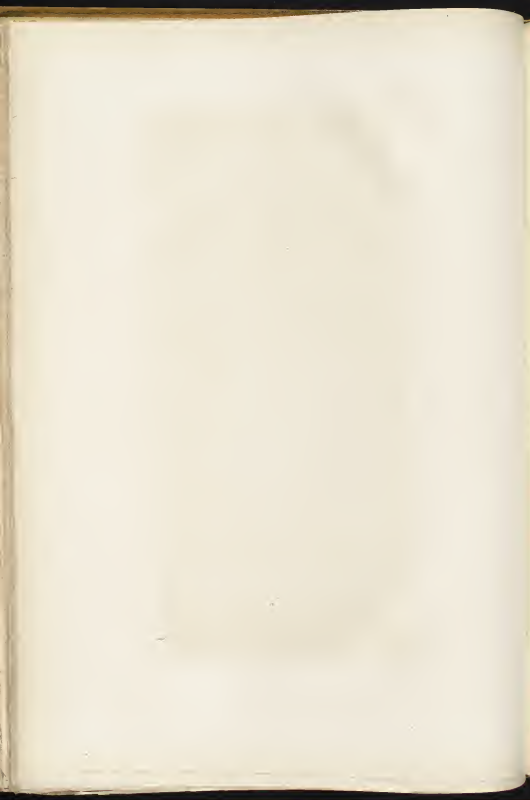
MAN'S GARMENT.

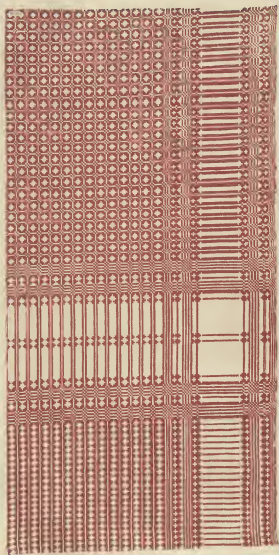
Length, 3 Yds. 2 1/2 Ins.; Width, 1 Yd. 2 1/2 Ins.; Weight, 1 lb. 2 oz. 14 dr.

AURUNGABAD, DECCAN.

NO. 66, SECOND SERIES.

'808'





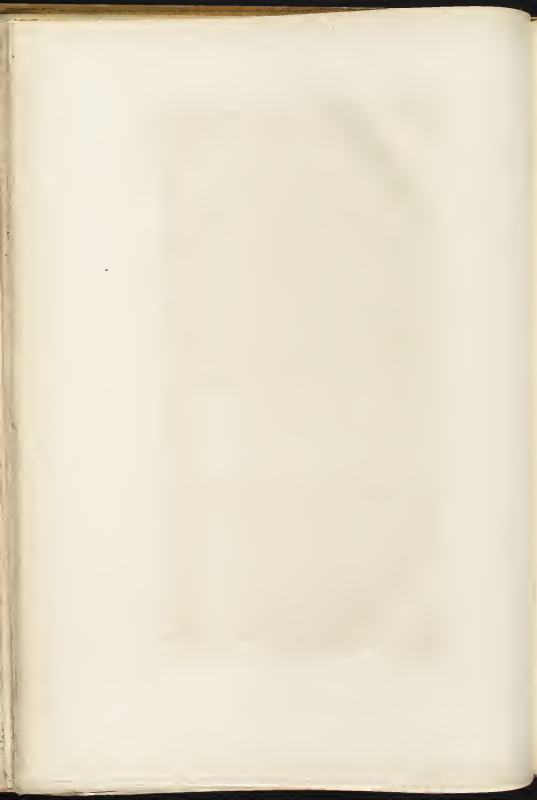
MAN'S GARMENT.

Length, 2 Yds. 3½ Ins.; Width, 59 Ins.; Weight, 15 oz. 1 dr.

HYDERABAD, DECCAN.

NO. 67, SECOND SERIES

'819-





MAN'S GARMENT.

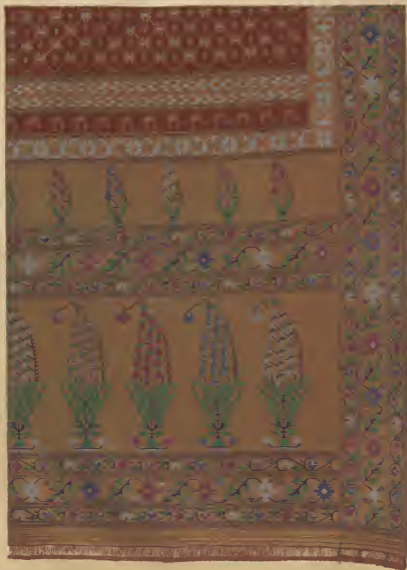
Length, 3 Yds. 17 Ins., Width, 1 Yd. 17 Ins.; Weight, 4 lb. 1 oz. 4 dr.

BOORHANPORE.

NO. 87A, SECOND SERIAL.

3541*





MAN'S GARMENT.

Length, 3 Yds. 25½ Ins., Width, 1 Yd. 26½ Ins.; Weight, 1 lb. 14 oz. 5 gr.

BOORHANPORE.

NO. 679, SECOND SERIES.

" 6849 "





MAN'S GARMENT.

Length, 2 Yds. 29 Ins., Width, 1 Yd. 11 Ins., Weight, 2 Lb. 5 Oz.

NUGGUR, KATTYWAR.

NO. 65, SECOND SERIES.

"1225"





MAN'S GARMENT.

Length, 3 Yds 31 Ins.; Width, 26 Ins.; Weight, 1 lb. 11 oz. 7 gr.

TATTA, SIND.

NO 71, SECOND SERIES

'8705'





MAN'S GARMENT.

Length, 2 Yds. 28 Ins.; Width, 24½ Ins.; Weight, 10 oz. 5 dr.

RANEEPORE, SIND.

NO. 73, SECOND SERIES

1892





MAN'S GARMENT.

Length, 4 Yds. Width, 29 Ins ; Weight, 1 lb. 5 oz 5/16

SIND.

no 74, SECOND SERIES.

"5880"





MAN'S GARMENT.

Length, 4 Yds $4\frac{1}{2}$ Ins.; Width, $28\frac{1}{2}$ Ins.; Weight, 1 lb. 1 oz. $\frac{3}{4}$.

SIND,

NO 75, SECOND SERIES

0075*





MAN'S GARMENT.

Length 2 Yds 2 Ins.; Width, 27 Ins.; Weight, 23 00-12 dr

HYDERABAD, SIND.

NO 77, SECOND SERIES.

2374 *





MAN'S GARMENT.

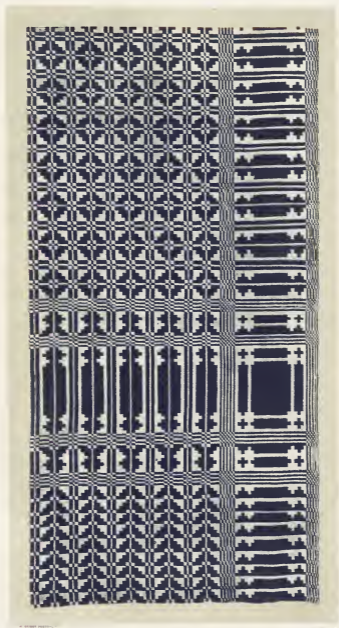
Length, 4 Yds., Width, 28 Ins.; Weight, 1 lb. 2 oz. 4 dr.

HYDERABAD, SIND.

NO 78, SCODHO STRAET.

1888





MAN'S GARMENT.

Length, 2 Yds 34½ Ins.; Width, 29 Ins.; Weight, 15 oz. 100.

NUSRAPORE, SIND.

NO 79, SECOND SERIES

1888





MAN'S GARMENT.

Length, 3 Yds. 32 Ins ; Width, 18 Ins ; Weight, 15 oz. 4 dr.

SIND.

NO. 10, SECOND SERIES.

"2017"





MAN'S GARMENT.

Length, 1 Yd. 55 Ins.; Width, 1 Yd. 18 Ins.; Weight, 1 lb. 11. 00-12 ct

NAGPORE.

NO 84, SROONO SILKES

"2284"





MAN'S GARMENT.

Length, 4 Yds. 14 $\frac{1}{2}$ Ins.; Width, 2 Yd. 52 Ins.; Weight, 1 lb

CHUNDEREE, CENTRAL INDIA.

NO. 86, SECOND SERIES

"5018"





MAN'S GARMENT.

Length, 3 Yds. 33 Ins.; Width, 1 Yd. 27½ Ins.; Weight, 9 oz. 8 dr.

CHUNDAREE.

NO 87, SECOND SERIES.

18671 *





MAN'S GARMENT.

Length, 4 Yds. 10 1/2 Ins.; Width, 1 Yd. 3 1/2 Ins.; Weight, 1 lb. 6 dr.

CHUNDAREE.

NO. 25, SECOND SERIES.

5054





MAN'S GARMENT.

Length, 4 Yds 17½ Ins.; Width, 1 Yd. 29 Ins.; Weight, 14 oz. 6 dr.

CHUNDAREE.

NO. 89, SECOND SERIES.

5578





MAN'S GARMENT.

Length, 4 Yds. 20 Ins.; Width, 1 Yd. 27 Ins.; Weight, 1 lb. 9 oz. 3 gr.

CHUNDAREE.

NO. 20, SECOND SERIES.

1887





MAN'S GARMENT.

Length 4 Yds. 6 Ins. , Width 1 Yd. 32 Ins.; Weight 12000-14 gr.

CHUNDAREE.

NO 91, SECOND SERIES

1877.





MAN'S GARMENT.

Length, 4 Yds 12 Ins., Width, 1 Yd 16½ Ins., Weight, 1 lb. 6 oz. 14 gr.

CHUNDAREE.

NO 92, SECOND SERIES.

"5508"





MAN'S GARMENT.

Length, 5 Yds. 16 Ins., Width, 1 Yd. 8 Ins., Weight, 1 lb. 14 oz. 2 dr.

BENARES.

NO 93, SECOND SERIES.

1856





MAN'S GARMENT.

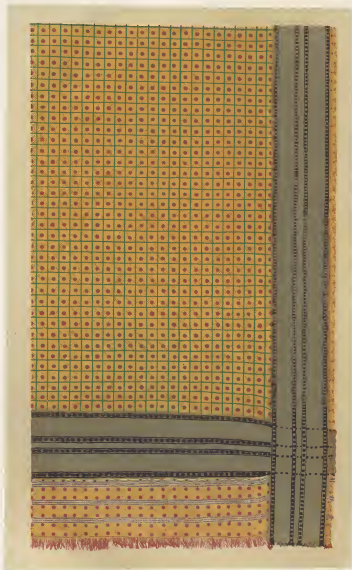
Length, 3 Yds. 15 $\frac{1}{2}$ Ins., Width, 1 Yd. 11 $\frac{1}{2}$ Ins., Weight, 3 lb. 4 oz. 14 gr.

BENARES.

NO. 94, SECOND SERIES.

"1871





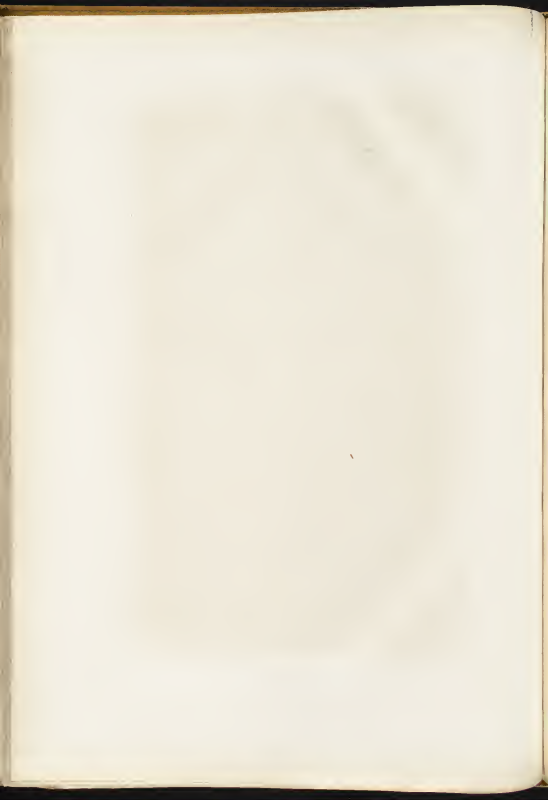
MAN'S GARMENT.

Length 3 Yds. 14½ Ins., Width 1 Yd. 20 Ins., Weight 1 lb. 11 oz. 3 dr.

BENARES.

NO 96, SECOND SERIES.

"3868"





MAN'S GARMENT.

Length, 5 Yds. 6½ Ins.; Width, 1 Yd. 4½ Ins.; Weight, 1 lb. 9 oz.

BENARES.

no 97, SECOND SERIES.





MAN'S GARMENT.

Length 5 Yds 7½ Ins., Width 1 Yd 5½ Ins., Weight, 2 lbs. 5 oz 6 dr

BENARES.

NO 98, SECOND SERIES.

7287





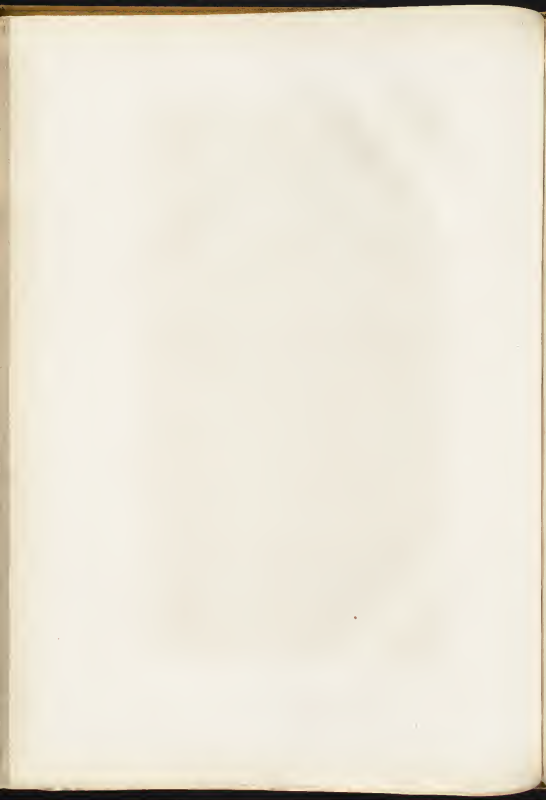
MAN'S GARMENT.

Length, 3 Yds. 17 Ins., Width, 1 Yd. 23½ Ins., Weight, 3 Lb. 11 Oz. 13 Gr.

BENARES.

NO 99, SECOND MARK.

"2887





MAN'S GARMENT.

Length, 3 Yds. 16½ Ins., Width, 2 Yds. 26 Ins., Weight, 3 lbs. 12 oz.

BENARES.

NO. 100, SECOND SERIES.

"3251"





MAN'S GARMENT.

Length, 2 Yds. 1 In.; Width, 2 Yds. 1 1/2 In.; Weight, 2 lb. 8 oz. 4 dr.

BENARES.

NO. 100A, SECOND SERIES.

"1848"





MAN'S GARMENT.

Length, 4 Yds. 33 Ins., Width, 34 Ins., Weight, 1 lb. 2 oz. 8 gr.

LOODIANA.

NO 101, SECOND SERIES.

"2003"





MAN'S GARMENT.

Length, 3 Yds. 28½ Ins. Width, 29½ Ins. Weight, 12 oz. 7½ lb.

GOODASPORE.

NO 108, SECOND SERIES.

"2135"





MAN'S GARMENT.

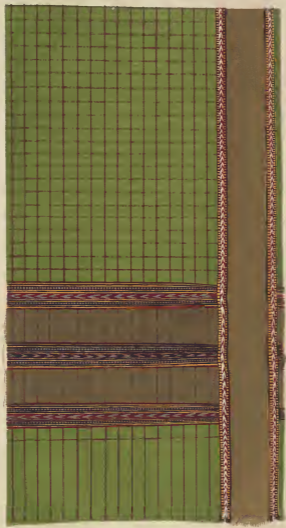
Length, 3 Yds 20 $\frac{1}{2}$ Ins., Width, 27 $\frac{1}{2}$ Ins.; Weight, 10 00 $\frac{1}{2}$ Oz.

JHELUM.

NO 104, SECOND SERIES.

1898





MAN'S GARMENT.

Length, 3 Yds. 23 Ins., Width, 27½ Ins., Weight, 10 OZ. 25 GR.

UMRITSUR.

NO 108, SECOND SERIES.

"7281"





MAN'S GARMENT.

Length, 3 Yds., Width, 27 Ins., Weight 9 oz. 2 lb.

PUNJAB.

NO 110, SECOND SERIES.

"5551"





MAN'S GARMENT.

Length, 4 Yds 5 Ins., Width, 22½ Ins., Weight, 1 lb. 2 1/2 oz.

PUNJAB.

NO 111, SECOND SERIES.

"2505"





MAN'S GARMENT.

Length, 3 Yds. 14 Ins., Width, 1 Yd. 20 Ins., Weight, 2 lb. 14 oz. 10 in.

PUNJAB.

NO. 112, SECOND SERIES.

• 2254 •





MAN'S GARMENT.

Length, 4 Yds. 7 Ins. Width, 25 Ins. Weight, 12 1/2 Oz. a Sq.

BHAWULPORE.

NO 113, SECOND SERIES

1893





MAN'S GARMENT.

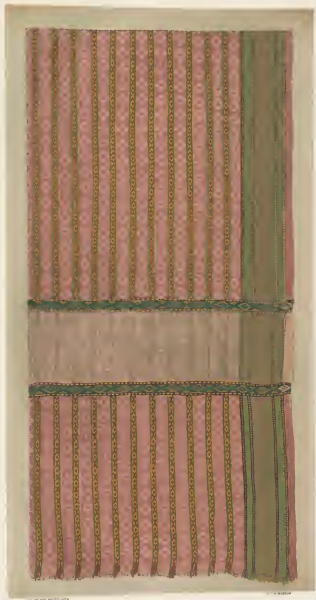
Length, 4 Yds 10 Ins.; Width, 27 Ins.; Weight, 12 oz. 3/4

BHAWULPORE.

NO 114, SECOND SERIES.

• 0110 •





MAN'S GARMENT.

Length, 4 Yds 3½ ins., Width, 27½ ins., Weight, 13 oz 7 dr

BHAWULPORE.

NO 115, SECOND SERIES

1881





MAN'S GARMENT.

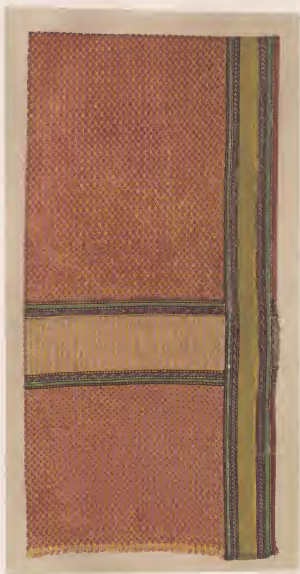
Length, 4 Yds. 5½ Ins.; Width, 27 Ins.; Weight, 9 oz.

BHAWULPORE.

NO 116, SECOND SERIES

1887





MAN'S GARMENT.

Length, 4 Yds 8 Ins.; Width, 26½ Ins.; Weight, 21 oz. 25 gr.

BHAWULPORE.

NO 117, SECOND SERIES.

1867.





MAN'S GARMENT.

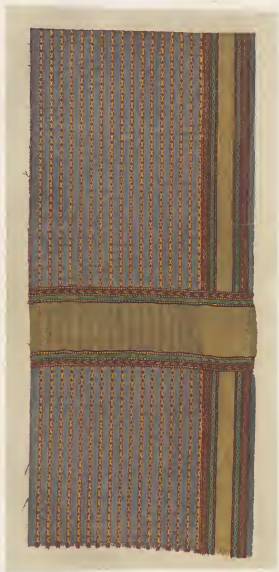
Length, 3 Yds 15 Ins.; Width, 26½ Ins.; Weight, 1000z. (2 lb.)

BHAWULPORE.

NO 116, SECOND SERIES.

5264"





MAN'S GARMENT.

Length, 4 Yds. 11½ Ins.; Width, 28 Ins.; Weight, 12 oz. 15 gr.

BHAWULPORE.

NO 119, SECOND SERIES

1877-





MAN'S GARMENT.

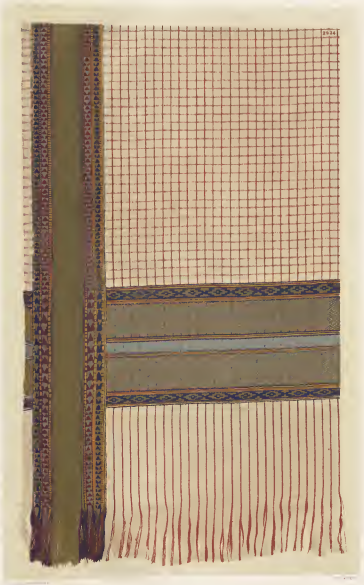
Length, 3 Yds. 2 1/2 Ins. Width, 35 Ins. Weight, 15 00/100 Lbs.

LAHORE.

NO. 120, SECOND SERIES

' 1885'





MAN'S GARMENT.

Length, 3 Yds. 31 Ins., Width, 1 Yd. 20 1/2 Ins., Weight, 1 Lb. 13 OZ. 4 gr.

LAHORE.

NO. 121 SECOND SERIES.

5334 *





MAN'S GARMENT.

Length, 3 Yds. 30] Ins. . Width, 31 Ins. . Weight 1 lb. 4 oz. 5/16

MOOLTAN.

NO. 122, SECOND SERIES.

"2244"





MAN'S GARMENT.

Length, 3 Yds. 29 Ins., Width, 30 Ins., Weight, 2 3/4 oz. 2 ct.

MOOLTAN.

NO 123, SECOND SECTION.
"2541"





MAN'S GARMENT.

Length, 3 Yds. 28 Ins.; Width, 30½ Ins.; Weight, 1 lb. 2 oz. 4 gr.

MOOLTAN.

NO 125, SECOND SERIES.

"3102"





MAN'S GARMENT.

Length, 3 Yds 13 1/2 Ins., Width, 30 1/2 Ins.; Weight, 1 lb 10 1/2 oz.

MOOLTAN.

NO 126, SECOND SERIES

1880





MAN'S GARMENT.

Length, 2 Yds. 27 Ins.; Width, 1 Yd. 6½ Ins.; Weight, 1 lb. 15 oz. 14 gr.

CACHAR.

NO 129, SECONDO SARGO

"OSTO"





MAN'S GARMENT.

Length, \pm Yd. 2½ Ins.; Width, \pm Yd. 25½ Ins.; Weight, \pm Lb. 11 oz.

CACHAR.

NO. 130, SECOND SERIES

"3214"





MAN'S GARMENT.

Length, 4 Yds. 3½ Ins. Width, 16 Ins.; Weight, 15 or 8 lb.

ARRACAN.

NO 131, SECOND SERIES.

"8888"





MAN'S GARMENT.

Length, 2 Yds 3½ Ins.; Width, 1 Yd. 12 Ins.; Weight, 2 lbs. 10½ Oz. 1 dr.

SYLHET.

NO 132, SECOND SERIES

"330"





MAN'S GARMENT.

Length, 2 Yds. 16½ Ins., Width, 1 Yd. 4 Ins., Weight, 11 Ounces.

SIAM.

NO. 133, SECOND SERIES

1894





MAN'S GARMENT.

Length, 2 Yds. 3 1/2 In. ; Width, 1 Yd. Weight, 14 oz. 4 1/2

PALEMBANG.

NO 134, SECOND SERIES.

' 3337'





EMBROIDERED CHAIR COVER.

DELHI.

No 386.





PHOTO-LITH BY W. WOOD

W. & A. GIBSON, LONDON

EMBROIDERED SCARF.
 WHITE SILK ON BLACK NET.

Length 3 Yards.
 Width 33 Inches.
 Weight 62 oz.
 Price (1855) .. Rs. 9.

DELHI.



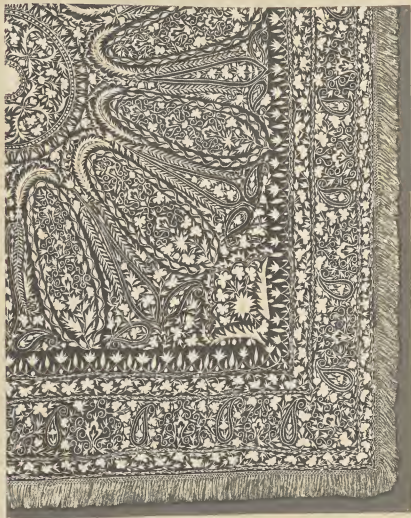


PHOTO LITH BY HERRING

INDIA MUSEUM

DELHI EMBROIDERED SHAWL
WHITE SILK ON BLACK NET





EMBROIDERED CANOPY.

КЪТОМ.

No 983

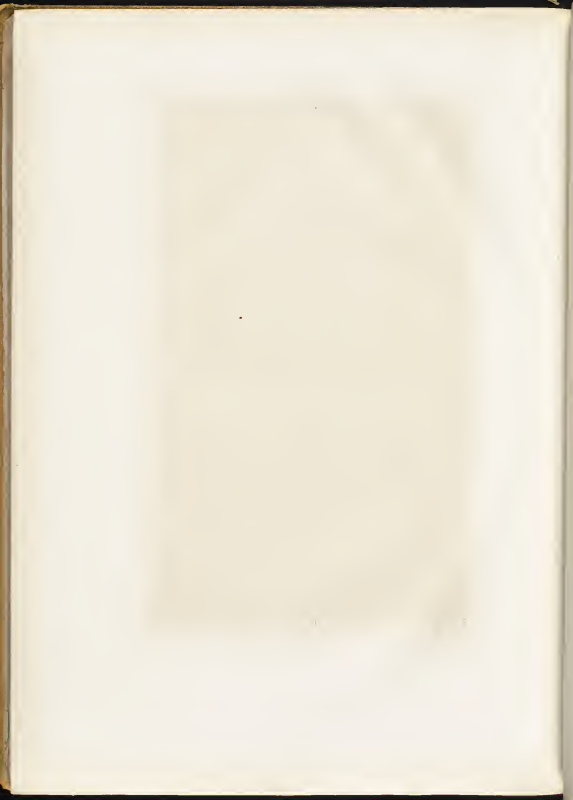




M A T.
PALGHAT, MADRAS.

NO. 380, SECOND SERIES

"10725 D"





MAT.
PALGHAT, MADRAS.

NO 300, SECOND SERIES

"1921 A"





M A T.
PALGHAT, MADRAS.

no. 391, SECOND SERIES

* 1272: 8*





M A T.
PĀLGHĀT, MADRAS.

no. 392, SECOND SERIES.

"18721 G"





M A T.
PALGHAT, MADRAS.

NO 393, SECOND SERIES.

"1873 C."





M A T.
PALGHAT, MADRAS.

NO 204, SECOND SERIES.

"12751 2"



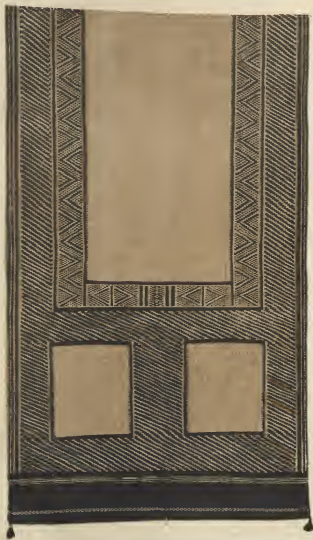


M A T.
PALGHAT, MADRAS.

NO 398, SECOND SERIES

"1921 G"





M A T.
PALGHAT, MADRAS.

NO 326, SECOND SERIES

"1271 H"





M A T.
PALGHAT, MADRAS.

NO 397, SECOND SERIES

* 12791, 1"





MAT.
PALGHAT, MADRAS.

NO 398, SECOND SERIES.

"12921"





M A T.
MADRAS.

NO 289, SECOND SERIES

"12724"

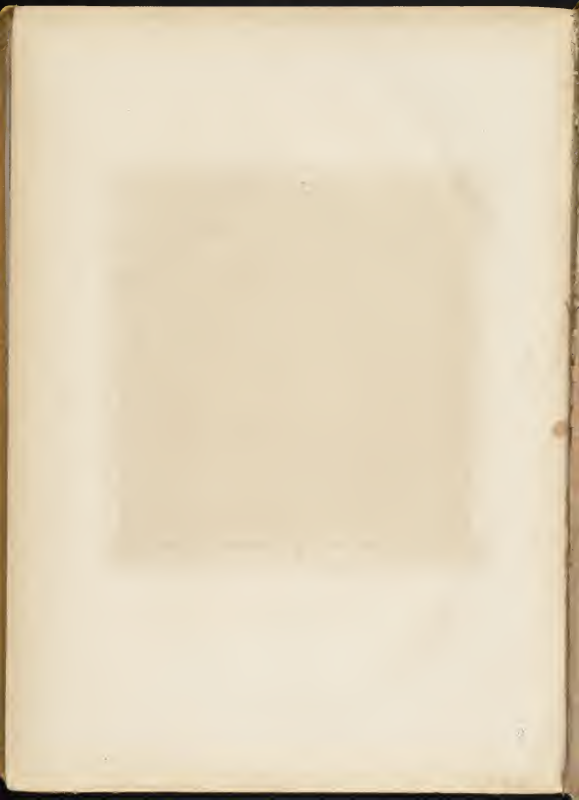


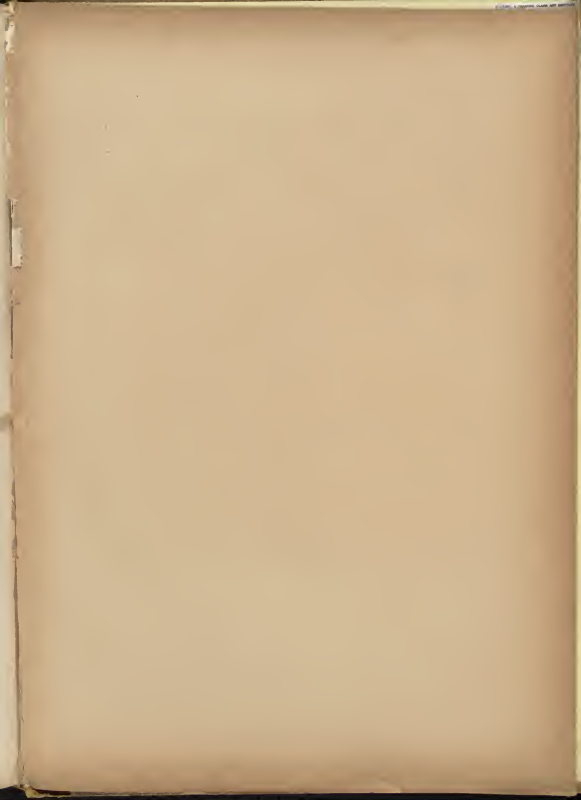


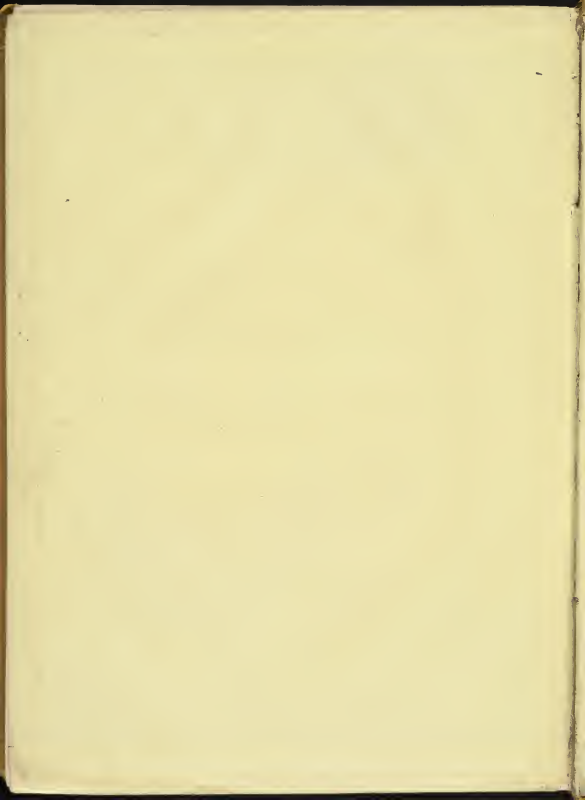
MAT.
JESSORE.

NO 400, SECONO SERIES

1272







STANDARD & BANGS CLASS AND NUMBER
61720 14 1911
March 2nd 1911
3 1912 00053 5011

